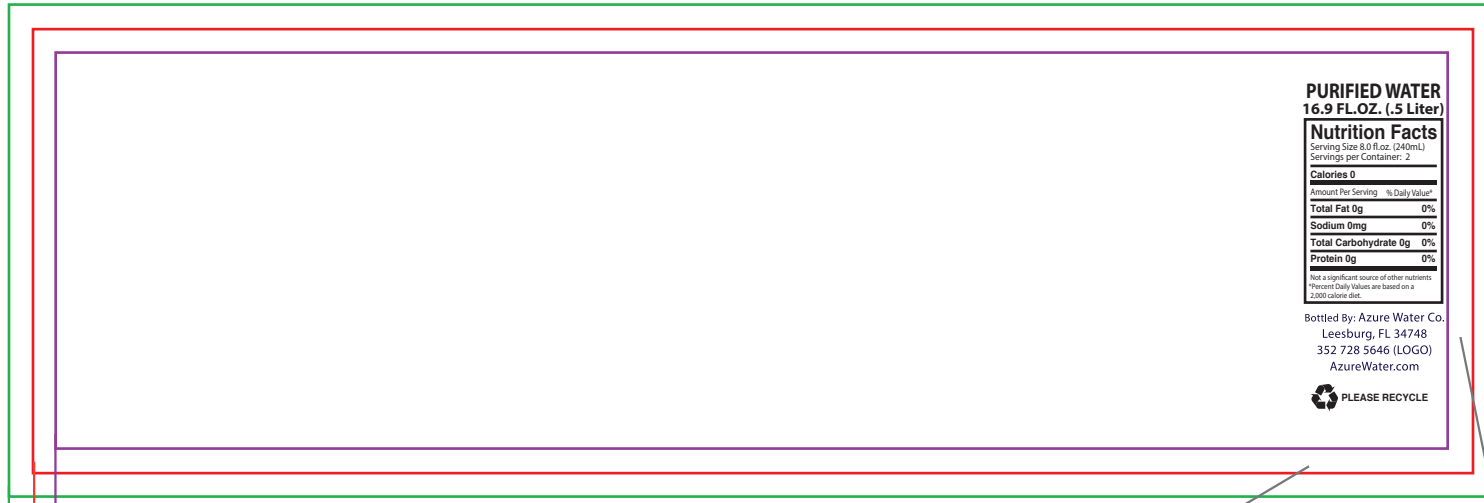


## WATER LABEL TEMPLATE - ART GUIDELINES

### 0.5 Liter (16.9 FL OZ) AND 12 oz (12 FL OZ) BULLET BOTTLES



**CA CASH REFUND**  
 Required on any orders  
 being shipped into the  
 state of California  
 CA CASH REFUND

Text and Graphics safety. All important items must be contained within the purple line. (7.25x 2.0625 in)  
 Actual size of final label. Labels will be cut at the red line. (7.5 x 2.3125 in)  
 Bleed line. Any graphics or colors that "bleed" off the label must travel to the green line.  
 Any bleed graphics not extending to the green line will not print correctly. (7.75 x 2.5625 in)

**SOURCE**  
 Required by law.  
 Can be placed  
 anywhere on label.

**NUTRITION PANEL**  
 Not required by law  
 unless making a  
 nutritional claim.

## IMPORTANT INSTRUCTIONS

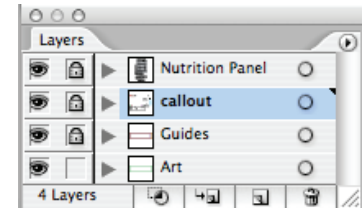
### MANDATORY ARTWORK CHECKLIST

- ALL type converted to outlines
- ALL images are embedded - no links are used
- ALL art uses CMYK workspace, not RGB
- ALL Pantone Colors (PMS) converted to CMYK  
 Unless you specifically request PMS colors  
 (extra charge will apply)
- NO low-res images from the web (72dpi)
- ALL supporting images and fonts supplied when  
 necessary

### ACCEPTABLE ARTWORK FORMATS

We import your artwork into Adobe Illustrator CS6

- Illustrator: Please convert all type to outlines.  
 Embed all images
- EPS
- Photoshop: Save in layers or just the art layer.  
 300dpi CMYK preferred (anything  
 less might appear pixelated).
- PDF: High Res (300dpi)
- JPG: High Res (300dpi, max quality)



This file was built in layers (nutrition panel, guides and art) that can be turned on and off. Some of the layers are locked so they can't be altered. The Art layer is blank to accommodate your art on the correct layer (restacking layers might block other necessary graphics).

**WHEN SENDING FLATTENED ART, PLEASE TURN OFF THE TEMPLATE AND CALLOUT LAYERS, PLEASE INCLUDE BLEEDS.**